

# 2023

## PRODUCT RANGE

- LPG STORAGE TANKS
  - Underground
  - Aboveground
- DOMESTIC LPG TANKS
- LPG TRANSPORT VEHICLES
  - Semi-trailers
  - Bobtails
- AUTO-GAS STATIONS
- FILLING PLANTS
- TURNKEY PROJECT MANAGEMENT
- DESULHURIZATION PLANTS



# MARU

## LPG SOLUTIONS

DESIGN

ENGINEERING

IMPLEMENTATION

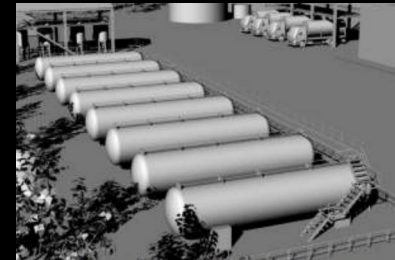


MARU LPG ENGINEERING

Besides the Japanese translation of the word, which means round/ circle, MARU is a collective of professionals teamed up to form the “perfect” circle. We engineer requirements of our clients via thorough studies and research, re-create their dreams and finalize this intense process by implementing these re-creations onto their products and/or facilities.

Located in industrial and financial capital, Istanbul, MARU team has fast and easy access to the main industrial zones in Turkey. Having worked in the sector for more than 20 years, our team is well-experienced with precise and divers product requirements – of both domestic and international LPG/ GAS professionals – ranging from tanks, filling equipment and valves to consumables for convenience stores in addition to miscellaneous services such as design, engineering and implementation of products/projects tailored to specific needs.

We keep introducing up-to-date high-tech solutions to our clients from all over the world.



LPG STORAGE TERMINALS



AUTOGAS STATIONS



CYLINDER FILLING PLANTS

## Above Ground Tanks

Storage capacities starting from 5 cubic meter to 250 cubic meter enable our customers to perform a flexible production, while high performance coating applications in accordance with EN12944 & EN13445 ensure durability.

NDT testing (radiographic, penetrant, ultrasonic, magnetic particle and such) of our tanks guarantee an efficient, safe and long-term operation.

For spherical tanks (>250 m<sup>3</sup>) to be manufactured on site, please kindly contact us for details.





### Under Ground Tanks



Storage capacities starting from 5 cubic meter to 250 cubic meter enable our customers to perform a flexible production, while high performance coating applications in accordance with EN 12944 ensure durability. With a new design of man-holes, we assist our clients save space during transportation.

Our cathodic protection system prolongs life span of underground tanks for decades, hence product quality can be preserved rust-free for many years



## Domestic Tanks

As the name signifies, domestic tanks are mainly used for daily household tasks such as heating, cooking and hot water, or light industrial purposes.

In areas where there is no fuel transmission networks and standard LPG cylinder capacities remain incapable or inefficient, our "Domestic Tanks" require very small installation spaces and provide an economical solution for buildings. In addition to living areas such as villas, farms, housing estates, "Domestic Tanks" can conveniently be used in commercial structures such as shopping malls, factories and warehouses for various purposes as well.



## Semi-Trailer Tanks

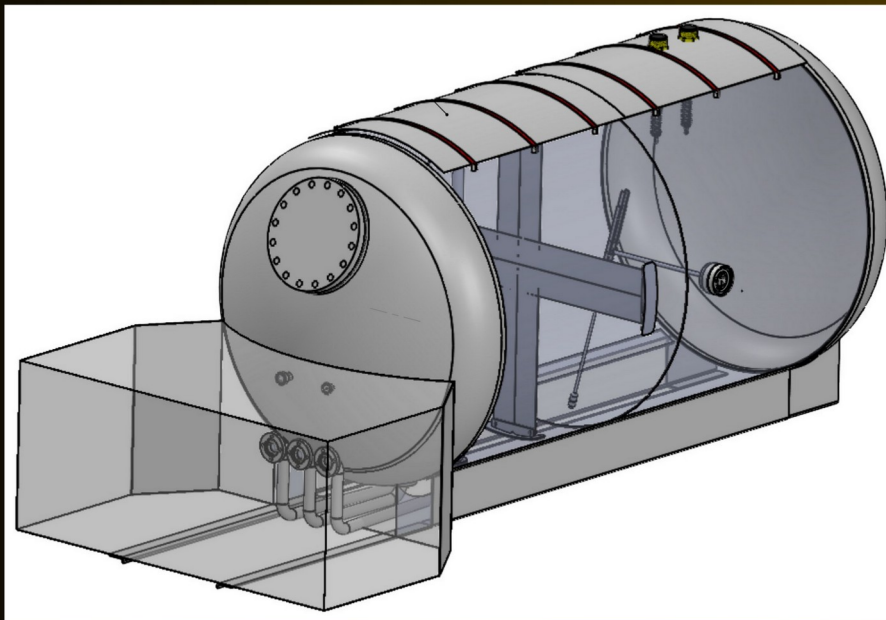


Used to transport relatively high amounts of LPG where high filling needs are present, semi-trailers should combine safety and efficiency needs of ground storage tanks with vehicle safety, operational reliability and low maintenance needs. Available from 38 m<sup>3</sup> to 80 m<sup>3</sup>.

We offer manufacturing standards in line with ADR, TPED, EN 12493, ASME and CO-DAP.

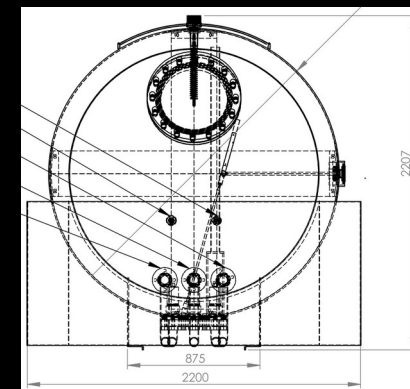
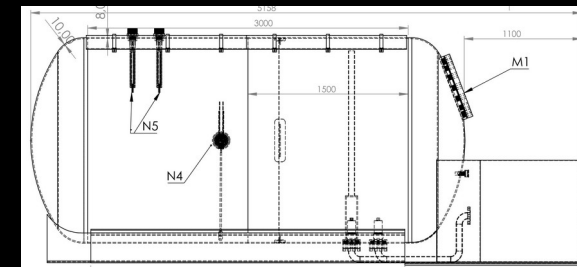


## Bobtail Tanks



Designed and manufactured perfectly to fit your trucks of any brand, our bobtails are shipped to you completely built on a single chasis; including accessories such as tool-boxes, pumps, valves and flow-meters.

We offer manufacturing standards in line with ADR, TPED, EN 12493, ASME and CODAP.





# LPG Auto-gas Stations

Auto-gas station can be designed by our experienced team of engineers, with a flexible and creative approach. The complete set-up is shipped to locations, pre-tested and guaranteed.



MARU LPG ENGINEERING

## Skid Dispenser Systems



Designed to be a miniature LPG Filling Station, Dispenser Systems are preferred in remote residence or construction areas where other means of fuel transmission networks are unavailable.



### Cylinder Filling Carousels

A revolving frame system on which cylinder filling machines are mounted.

Provides speed and ease for cylinder filling operations.

Compatible with any electronic filling scale.

Driven by an ex-proof motor reductor selected in accordance with required filling capacity and speed of chain conveyor.

Pneumatically controlled input mechanism used for loading cylinders on filling machine between conveyor and carousel.

Equipped with a bottom ventilation system to continuously remove accumulated gas concentration present during operation



MARU LPG ENGINEERING

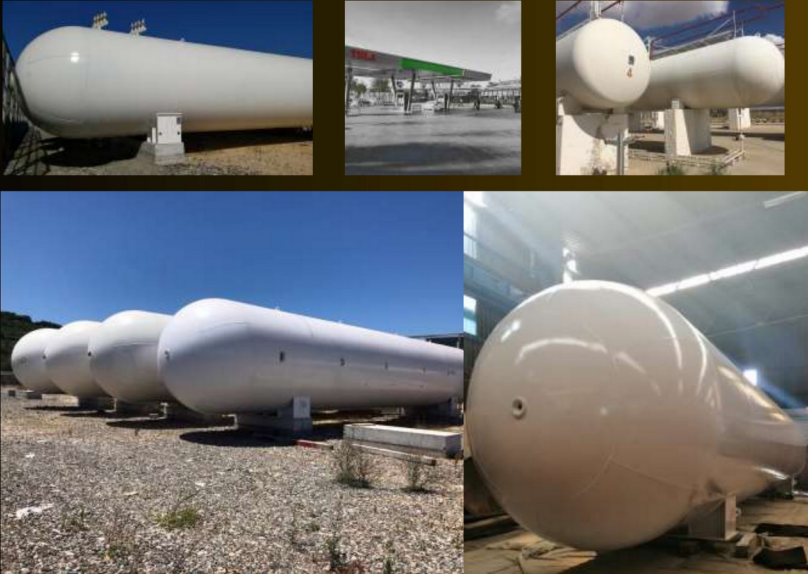
### Skid Scale Systems



Scale Systems are designed to refill LPG cylinders preferred in remote residence or construction areas where other means of fuel transmission networks are unavailable.

For these systems, either mechanic or electronic filling equipment can be preferred.

No matter what you plan to do in LPG business, just let us know your target, we will design, engineer, manufacture, install and deliver to you ready to start.



### FROM SCRATCH TO START

Whether it is an Auto Gas Station, a Deodorization or a Cylinder Filling Plant, our experienced team of engineers design it for you and our field team makes it happen.



MARU LPG ENGINEERING

## Desulphurization Tanks



In order to reduce the sulphur content of LPG for very specific purposes such as to use in propellants in cosmetics sector; or to use in gas mixtures that are used to inflate isolation foams in building materials industry; or in refrigerants in white goods sector, these special tanks utilise very specific minerals. Purified output provides corrosion and exhaust emissions less than  $6 \text{ m/nm}^3$ . Single or twin tower, serial or parallel versions are available.

With our expertise of years and know-how on these types of tanks, we meticulously design and engineer in accordance with your requirements of the final output LPG quality.



batusan

FALCON



uestco



ALLES CHARIS GAS



Coral Gas  
International Ltd



# MARU

LPG SOLUTIONS

## Contact Info



HEAD OFFICE



Yenisehir Mah. Sumbul Sok. Sweet Life Residence, A Blok  
Apt. No:6/1/79 Pendik, 34909 / ISTANBUL, Turkey.



+90 216 706 46 60



+90 541 319 70 01



[info@marutr.com](mailto:info@marutr.com)